

Shaking thermostatic bath "BSH"



BSH

Advantages

Over-temperature safety thermostat
 Removable tray. Easy cleaning

Features:

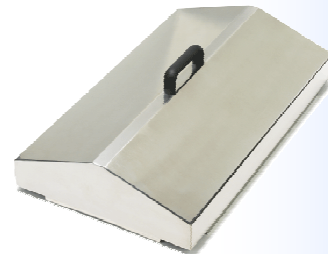
- Adjustable temperature from room temperature + 5° C to 100°
- Resolution: 0,1° C.
- Programmable delayed start (0- 99,5 hours)
- Programmable incubation time (0-99,5 hours)
- Safety thermostat with heating system blockage in the case of over-temperature (DIN 12879 Class 2)
- Temperature ramp
- Inner tank and external case made in stainless steel
- Shaking width: 40 mm.
- Adjustable shaking speed: 10-150 rpm
- Overload protection

Reference	Capacity	Temperature	Stability/ Homogeneity	Ext. H x L x D in mm	Power W	Weight kg.
BSH	27 L	Amb+5°-100° C	0,05° C/± 1° C	340 x 660 x 430	1600	10

Shaking thermostatic bath "BSH" ACCESSORIES

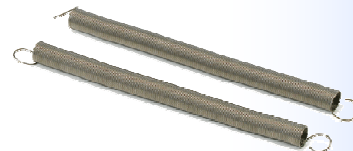
Stainless steel lid "roof type"

Reference: TT-6 BSH



Spring set (2 U)

Reference: SPRING BSH



Clamps for erlenmeyers



Reference	CLAMP-100	CLAMP-250	CLAMP-500	CLAMP-1000	CLAMP-2000
Volume	100 ml	250 ml	500 ml	1000 ml	2000 ml
Tray capacity	15	12	8	6	3

Rack with handles

Reference	Description
GRB-5613	56 tubes (14 x 4) Ø 13 mm
GRB-4816	48 tubes (12 x 4) Ø 16 mm
GRB-3020	30 tubes (10 x 3) Ø 20 mm



Thermostatic baths