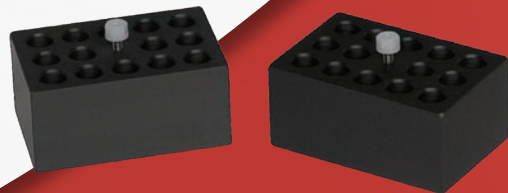
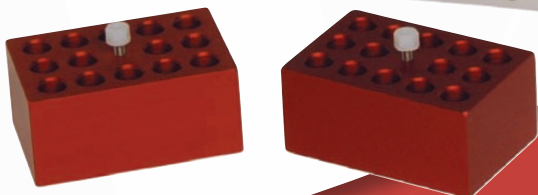




Bench-Top Coolers & Heaters





Bechtop Coolers and Heaters

Boekel Scientific offers a complete line of bench-top coolers/heaters for protocols for both heating and cooling of samples. They can be used for warming and defrosting or cooling of cell lines in vials or tubes or for cooling and heating of blood samples.

Boekel Bench-Top Coolers/Heaters all feature an LCD temperature display that is easily seen throughout the lab and Peltier effect heat pumps that do not use compressors or CFC's. In addition, all Boekel Coolers/Heaters come with a two-year warranty for parts and labor.

Boekel Tropicooler

Models 260014 and 260014-2

Features:

- Temperature range of 39°C below ambient to 69°C
- Maintains 14°C temperature used in ligation reactions or 17°C for storing oocytes
- "Press to Set" microprocessor controller
- Excellent alternative to messy ice buckets and water baths, which can be a source of contamination
- Useful for cooling blood samples prior to coagulation
- Suitable for warm incubation of microcentrifuge tubes for hybridization

Accessories

- Block Module with block extractor, 7 – 0.5 mL and 7 – 1.5 mL microcentrifuge tubes **Model 260055**
- Block Module with block extractor, 14 – 0.5 mL microcentrifuge tubes **Model 260052**
- Block Module with block extractor, 14 – 1.5 mL microcentrifuge tubes **Model 260152**
- Domed plastic lid **Model B1702577**



Supplied With:

- Two aluminum block modules with block extractor; each with a capacity for 14 – 1.5 mL microcentrifuge tubes
- Flat plastic lid

	Model 260014 (115 VAC)	Model 260014-2 (230 VAC)
Temperature Range	39°C below ambient to +69°C	
Accuracy	+/- 1° C of set point	
Overall Dimensions (Width x Length x Height)	24.8 cm x 28.6 cm x 18.4 cm (9.75 in x 11.75 in x 7.25 in)	
Well Dimensions (Width x Length x Height)	5.7 cm x 8.7 cm x 3.7 cm (2.25 in x 3.5 in x 1.5 in)	
Shipping Weight	7.7 kg (17 lb)	
Electrical	115 VAC 50/60 Hz 100 W	230 VAC 50/60 Hz 100 W (CE)

Boekel Polar Block II

Models 260013 and 260013-2

Features:

- Temperature range 35°C below ambient
- Useful for DNA/RNA ethanol precipitations
- Intermediate term storage of restriction enzymes, and other labile reagents
- Active cooling eliminates need to leave samples on the bench too long in ethylene glycol filled freezer blocks

Accessories

- Block Module with block extractor: 7 – 0.5 mL and 7 – 1.5 mL microcentrifuge tubes **Model 260055**
- Block Module with block extractor, 14 – 0.5 mL microcentrifuge tubes **Model 260052**
- Block Module with block extractor, 14 – 1.5 mL microcentrifuge tubes **Model 260152**



Supplied With:

- Block Module: 14 – 1.5 mL microcentrifuge tubes
- Flat plastic lid

	Model 260013 (115 VAC)	Model 260013-2 (230 VAC)
Temperature Range	35°C below ambient	
Accuracy	+/- 1° C of set point	
Capacity	1 Block Module	
Overall Dimensions (Width x Length x Height)	24.8 cm x 28.6 cm x 18.4 cm (9.75 in x 11.75 in x 7.25 in)	
Chamber Dimensions (Width x Length x Height)	14.3 cm x 5.7 cm x 5.7 cm (5.75 in x 2.5 in x 2.25 in)	
Shipping Weight	7.71 kg (17 lb)	
Electrical	115 VAC 50/60 Hz 100 W	230 VAC 50/60 Hz 100 W (CE)

Boekel Microcooler II

Models 260010 and 260010-2

Features:

- Temperature range 18°C below ambient
- Maintains 14°C temperature used in ligation reactions or 17°C for storing oocytes
- “Press to Set” microprocessor controller
- Well is watertight; functions as a small refrigerated bath
- Seamless aluminum pan holds 1.5 mL microcentrifuge rack
- Excellent alternative to messy ice buckets and water baths, which can be a source of contamination
- Useful for cooling blood samples prior to coagulation



Supplied With:

- Rack: 24 – 1.5 mL microcentrifuge tubes
- Flat plastic lid

	Model 260010 (115 VAC)	Model 260010-2 (230 VAC)
Temperature Range	18°C below ambient	
Accuracy	+/- 1° C of set point	
Capacity	1 Rack	
Overall Dimensions (Width x Length x Height)	24.8 cm x 28.6 cm x 18.4 cm (9.75 in x 11.75 in x 7.25 in)	
Chamber Dimensions (Width x Length x Height)	14.3 cm x 5.7 cm x 5.7 cm (5.75 in x 2.5 in x 2.25 in)	
Shipping Weight	6.7 kg (14 lb)	
Electrical	115 VAC 50/60 Hz 100 W	230 VAC 50/60 Hz 100 W (CE)

Boekel Minifridge II

Models 260009 and 260009-2

Features:

- Temperature range 18°C below ambient
- Maintains 14 °C temperature used in ligation reactions or 17°C for storing oocytes
- “Press to Set” microprocessor controller
- Well is watertight; functions as a small refrigerated bath
- Accommodates small beakers, flasks or up to 3 standard microplates when stacked
- Excellent alternative to messy ice buckets and water baths, which can be a source of contamination
- Useful for cooling blood samples prior to coagulation



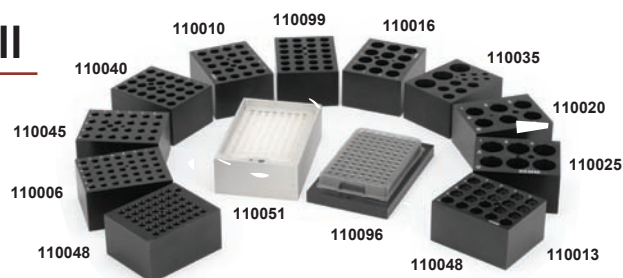
Supplied With:

- Domed plastic lid
- Block Extractor

	Model 260009 (115 VAC)	Model 260009-2 (230 VAC)
Temperature Range		18°C below ambient
Accuracy		+/- 1° C of set point
Number of Blocks Held		2
Overall Dimensions (Width x Length x Height)	24.8 cm x 28.6 cm x 18.4 cm (9.75 in x 11.75 in x 7.25 in)	
Well Dimensions (Width x Length x Height)	15.4 cm x 9.7 cm x 5.7 cm (6.25 in x 3.75 in x 2.25 in)	
Shipping Weight	6.7 kg (14 lb)	
Electrical	115 VAC 50/60 Hz 100 W	230 VAC 50/60 Hz 100 W (CE)

Heating Block Modules for Minifridge II

These precision –machined solid aluminum blocks are anodized to resist corrosion and are available in many sizes. Check with Boekel customer service at 800-336-6929 for more details.



Test Tube Block Modules

	Overall Dimensions (Width x Length x Height)	Shipping Weight	Capacity
110006	7.6 cm x 9.5 cm x 5.1 cm (3 in x 3.75 in x 2 in)	1.0 kg (2.25 lb)	35 - 6 mm tubes
110010	7.6 cm x 9.5 cm x 5.1 cm (3 in x 3.75 in x 2 in)	1.0 kg (2.25 lb)	20 - 10 mm tubes
110013	7.6 cm x 9.5 cm x 5.1 cm (3 in x 3.75 in x 2 in)	1.0 kg (2.25 lb)	20 - 13 mm tubes
110016	7.6 cm x 9.5 cm x 5.1 cm (3 in x 3.75 in x 2 in)	1.0 kg (2.25 lb)	12 - 16 mm tubes
110020	7.6 cm x 9.5 cm x 5.1 cm (3 in x 3.75 in x 2 in)	1.0 kg (2.25 lb)	6 - 20 mm tubes

	Overall Dimensions (Width x Length x Height)	Shipping Weight	Capacity
110025	7.6 cm x 9.5 cm x 5.1 cm (3 in x 3.75 in x 2 in)	1.0 kg (2.25 lb)	6 - 25 mm tubes
110035	7.6 cm x 9.5 cm x 5.1 cm (3 in x 3.75 in x 2 in)	1.0 kg (2.25 lb)	3 - 25 mm tubes 5 - 13 mm tubes 6 - 6 mm tubes
110040	7.6 cm x 9.5 cm x 5.1 cm (3 in x 3.75 in x 2 in)	1.0 kg (2.25 lb)	24 - 1.5 mL tubes
110045	7.6 cm x 9.5 cm x 5.1 cm (3 in x 3.75 in x 2 in)	1.0 kg (2.25 lb)	24 - 0.5 mL tubes
110048	7.6 cm x 9.5 cm x 5.1 cm (3 in x 3.75 in x 2 in)	1.0 kg (2.25 lb)	48 - 0.2 mL tubes

Miscellaneous Block Modules

	110051	110096	110099
Overall Dimensions (Width x Length x Height)	9.5 cm x 14.3 cm x 4.4 cm (3.75 in x 5.25 in x 1.75 in)	9.6 cm x 15.3 cm x 2.5 cm (3.75 in x 6 in x 1 in)	7.6 cm x 9.5 cm x 5.1 cm (3 in x 3.75 in x 2 in)
Shipping Weight	1.4 kg (3 lb)	1.4 kg (3 lb)	0.9 kg (2 lb)
Capacity	1 - 96 well microplate	1 - 96 well 0.2 mL microplate; 0.2 mL strips or 0.2 mL tubes	24 - 1.5 mL “Dolphin” tubes

NOTE: Blocks can also be used in all Boekel Digital and Analog Dry Baths. For more information contact Boekel.



855 Pennsylvania Boulevard • Feasterville, PA 19053 USA
 800-336-6929 • Phone: 215-396-8200 • Fax: 215-396-8264
 E-mail: boekel-info@boekelsci.com • Web site: www.boekelsci.com